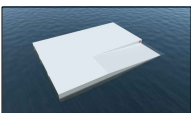


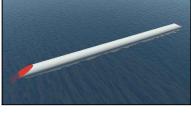
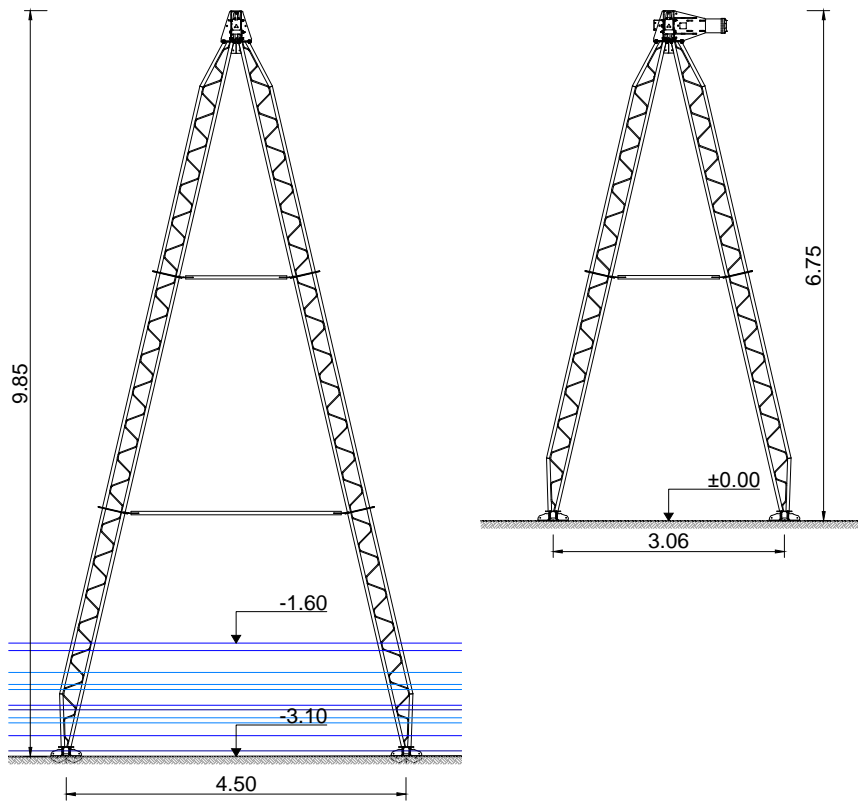
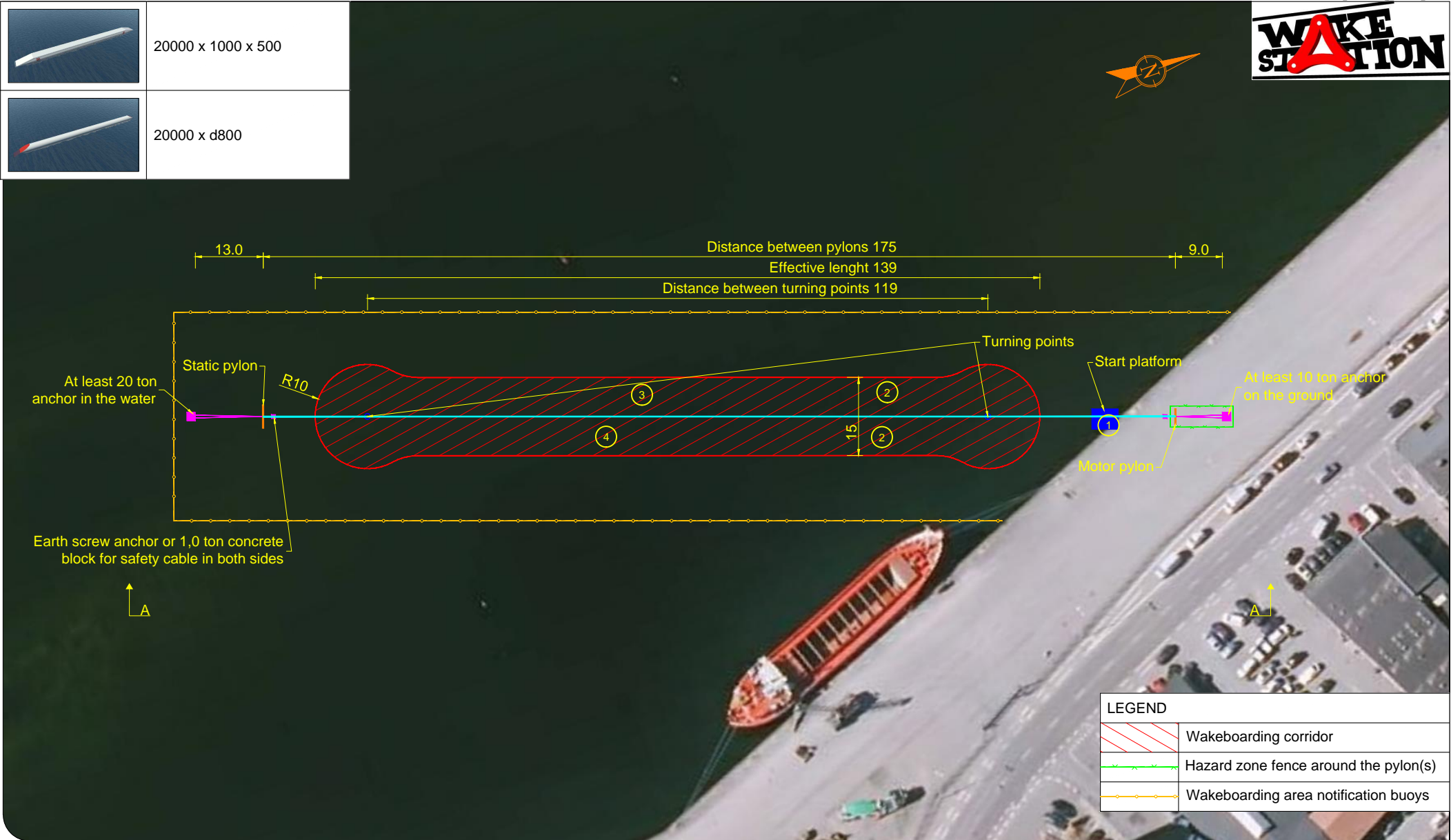


FEATURES SPECIFICATION			
No	Name	Shape	Dimensions, mm (L x W x H)
1	Start Platform		5000 x 3900 x 260
2	Kicker 110		4000 x 2000 x 1100

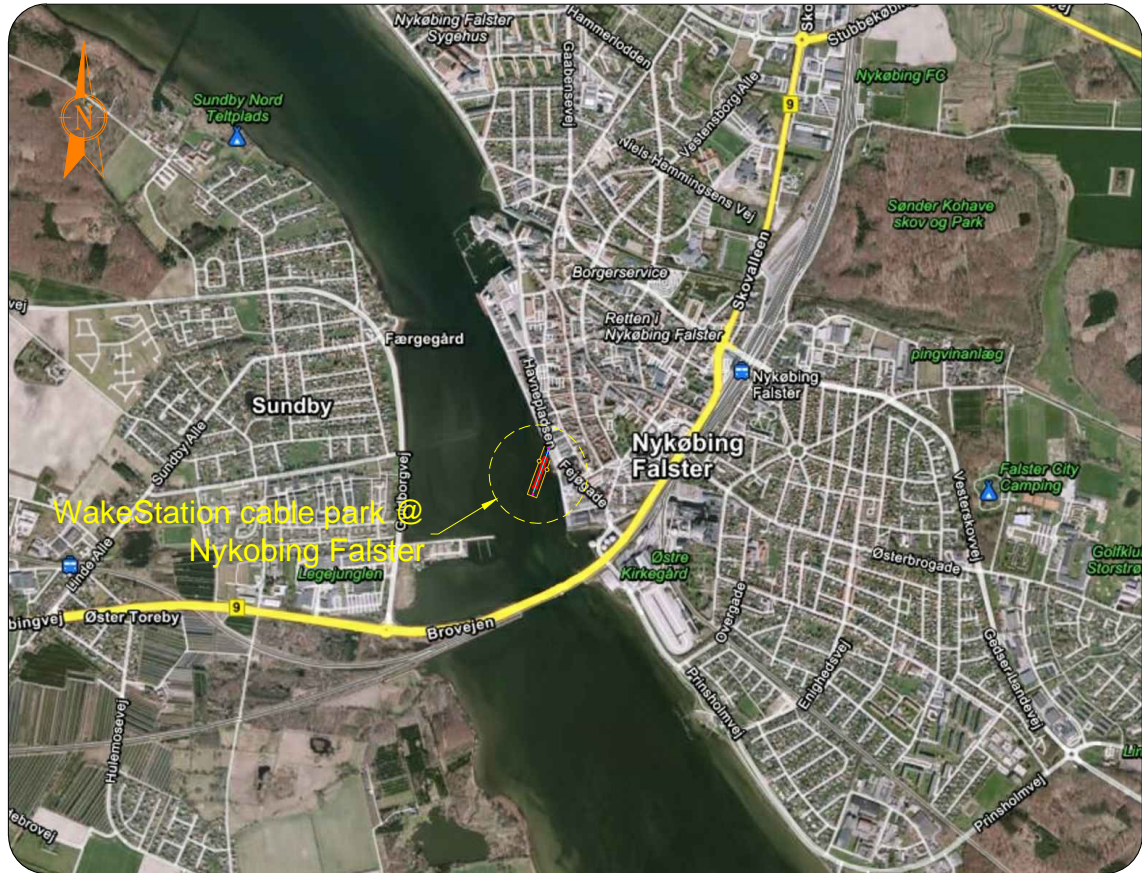
3	Flat Box II		20000 x 1000 x 500
4	Fat Pipe II		20000 x d800



FRONT VIEW OF PYLON WS985 AND WS675
(M 1:100)




WAKESTATION CABLE PARK SITE PLAN (M 1:1000)



AREA SITE PLAN (M 1:30000)

NOTES:

1. Designed cable park will have one track with motor pylon WS675 on land and static WS985 pylon in the water.
2. Ground under pylon feet have to be in same horizontal level and it must have equal bearing capacity for preventing uneven subsiding of feet. Motor pylon and static pylon ground level difference can not be more than 0,25 meters per 100 m distance between pylons.
3. WakeStation cable system each basic anchor should weight at least 9 tons. Indicated basic anchor weights are for anchors which are placed in the ground, if anchors are on the ground or in the water their weight must be heavier and the weight is also related with cable system configuration. Always contact with WakeStation manufacturer or your local distributor for ground or water anchorage. Anchor distance from pylon = pylon height * 1,3. If anchor top surface is higher or lower level from pylon feet plates then the level difference must me deducted (if higher) or added (if lower) to keep the anchoring cables angle 55°±5 degrees between vertical pylon to anchoring block.
4. Electrical connection for control box should be in 15 m radius from motor pylon (shelter, container or similar). Control box plug type is 3P+N+E, IP44, 16 A, 346 ... 415 V. Power supply must be 3x25A, 400V, 50Hz.
5. It's strictly forbidden to be behind pylons or to do there any activities. Area behind pylons is hazard zone. If there will be improper circumstances and pylon will fall down then risk of casualties is very high. Therefore hazard zone behind pylon must be surrounded with fence or similar and there must be placed signs that it is hazard zone and it's illegal to stay there. All pylons must be equipped with safety cable which catches the pylon if running cable snaps. Safety cables and earth screw anchors for them are included in WakeStation set. Change safety cable after each pylon fall or after 2 years! Without safety cables its prohibited to use WakeStation cable system!
6. WakeStation features are made form UV-proof HDPE500 (high-density polyethylene). All features are made from full plastic - no metal frame, no plywood used. It means that inner structures - sides, bottom and top are also made from same plastic and welded together with UV proof welding rod. Features can be made also according to Clients sketches and needs.
7. Maps used in this project are properties of Krak.dk.
8. Not indicated units are in meters.

Approved by:				Project: Nykobing Falster, Denmark				Scale:
Checked by:				Drawing:				According to drawing
Designed by:	M. Laurits		15.02.2021	WAKESTATION CABLE PARK SITE PLAN				Paper size: A3
	Snow & Wakeboard Solutions LLC phone: +372 51 65 819 www.wakestation.com sales@wakestation.com reg. code: 12084002			Drawing No.: 1.1	Sheet: 1/1	Tag: WS	Stage: PD	Project No.: 260121
				Current drawing is property of Snow & Wakeboard Solutions LLC. Therefore any kind of imitating, copying or distribution without written permission from Snow & Wakeboard Solutions LLC is strictly forbidden.				